

\$86,900 - 23 11265 31 Avenue, Edmonton

MLS® #E4428259

\$86,900

1 Bedroom, 1.00 Bathroom, 689 sqft

Condo / Townhouse on 0.00 Acres

Sweet Grass, Edmonton, AB

This spacious 1-bedroom, 1-bathroom condo is perfectly located with easy access to all essential amenities such as public transit, schools, shopping malls, restaurants, and more. It's situated on the second floor and features a large living and dining area that flows into an open kitchen. The apartment has been recently updated, along with new flooring, fresh paint, and new windows throughout the suite. You'll enjoy a private, covered balcony that overlooks the peaceful courtyard, providing a relaxing outdoor space. Additionally, there's a parking stall located conveniently near the building's entrance for added convenience. The condo fees cover various utilities, including electricity, heat, water, waste, sewage, and more, making it easier to manage your monthly expenses. This property is surrounded by lush green space and is just minutes away from popular locations like Southgate Mall, South Edmonton Common, and Century Park Transit Station. Don't miss the opportunity.

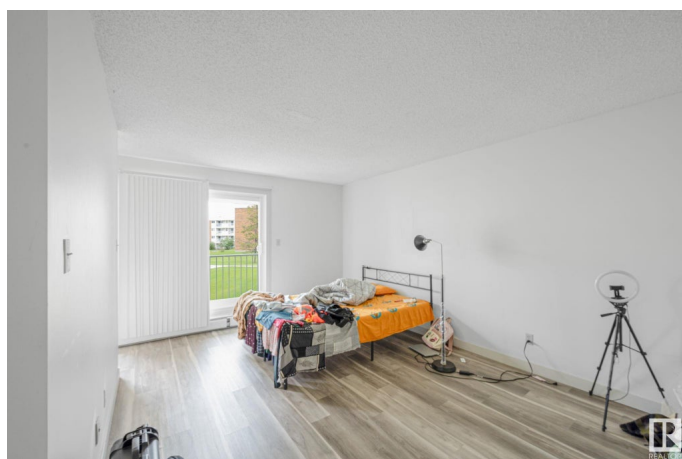
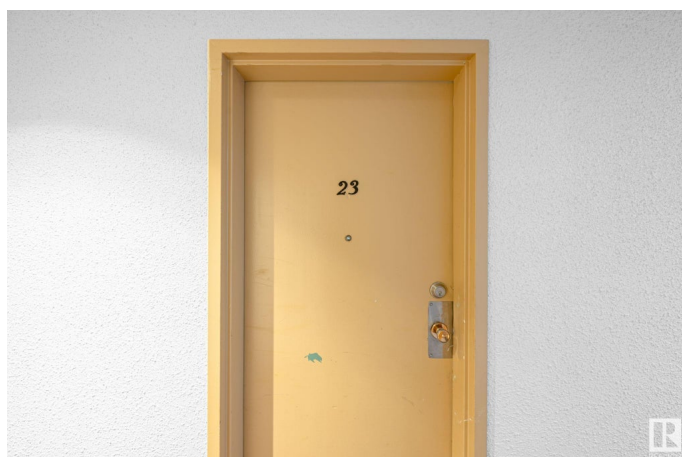
Built in 1977

Essential Information

MLS® # E4428259

Price \$86,900

Bedrooms 1



Bathrooms	1.00
Full Baths	1
Square Footage	689
Acres	0.00
Year Built	1977
Type	Condo / Townhouse
Sub-Type	Lowrise Apartment
Style	Single Level Apartment
Status	Active

Community Information

Address	23 11265 31 Avenue
Area	Edmonton
Subdivision	Sweet Grass
City	Edmonton
County	ALBERTA
Province	AB
Postal Code	T6J 3V7

Amenities

Amenities	On Street Parking, Detectors Smoke, Parking-Visitor, Pool-Indoor, Security Door
Parking Spaces	1
Parking	Stall
Has Pool	Yes

Interior

Appliances	Hood Fan, Refrigerator, Stove-Electric
Heating	Baseboard, Natural Gas
# of Stories	5
Stories	1
Has Basement	Yes
Basement	None, No Basement

Exterior

Exterior	Wood, Brick, Vinyl
Exterior Features	Flat Site, Golf Nearby, Landscaped, Playground Nearby, Public Transportation, Schools, Shopping Nearby
Roof	Tar & Gravel

Construction	Wood, Brick, Vinyl
Foundation	Concrete Perimeter

Additional Information

Date Listed	March 31st, 2025
Days on Market	32
Zoning	Zone 16
Condo Fee	\$521

DATA IS DEEMED RELIABLE BUT IS NOT GUARANTEED ACCURATE BY THE REALTORS® ASSOCIATION OF EDMONTON. COPYRIGHT 2025 BY THE REALTORS® ASSOCIATION OF EDMONTON. ALL RIGHTS RESERVED.Trademarks are owned or controlled by the Canadian Real Estate Association (CREA) and identify real estate professionals who are members of CREA (REALTOR®, REALTORS®) and/or the quality of services they provide (MLS®, Multiple Listing Service®)

Listing information last updated on May 2nd, 2025 at 9:17pm MDT