

\$425,000 - 28 Bella Coola Drive, Leduc

MLS® #E4432325

\$425,000

4 Bedroom, 1.50 Bathroom, 1,798 sqft

Single Family on 0.00 Acres

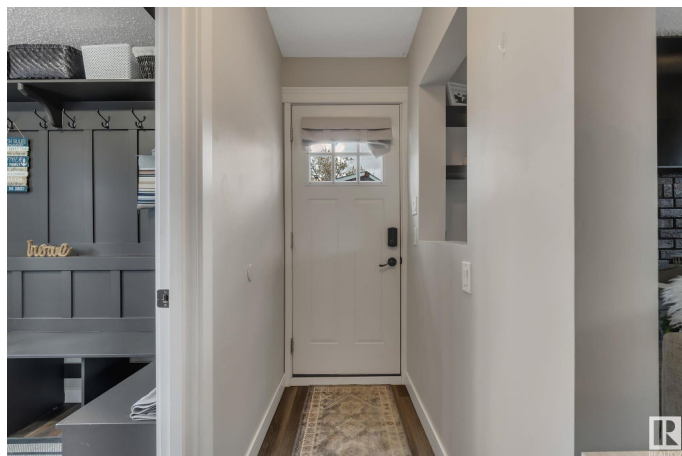
Corinthia Park, Leduc, AB

MASSIVE 11,000 sf lot facing green space in Corinthia Park. Recent renovations & big bright windows accentuate this beautiful 1800sf 4 level split. The main floor has a large kitchen with stainless steel appliances & an eat-in table as well as a formal dining room & living room adjacent. Down a level is a gorgeous newly renovated family room with vinyl plank floors, painted fireplace & floating shelves. There's a half bath with laundry & a huge boot room with hooks & benches at the side entry en route to the huge yard & oversized double garage. Upstairs are 3 bedrooms & a large bathroom. The basement has a nicely set up work-out room & a 4th bedroom. Stunning yard features a two-tiered deck with a gazebo, firepit area, 2 sheds & all the grass you can imagine to run around on. Great neighbourhood & location close to Corinthia Park School & shopping. Mostly newer vinyl windows.

Built in 1974

Essential Information

MLS® #	E4432325
Price	\$425,000
Bedrooms	4
Bathrooms	1.50
Full Baths	1



Half Baths	1
Square Footage	1,798
Acres	0.00
Year Built	1974
Type	Single Family
Sub-Type	Detached Single Family
Style	4 Level Split
Status	Active

Community Information

Address	28 Bella Coola Drive
Area	Leduc
Subdivision	Corinthia Park
City	Leduc
County	ALBERTA
Province	AB
Postal Code	T9E 4J3

Amenities

Amenities	Deck, Fire Pit, Vinyl Windows
Parking	Double Garage Detached, Over Sized

Interior

Appliances	Dishwasher-Built-In, Dryer, Refrigerator, Stove-Electric, Washer, Window Coverings
Heating	Forced Air-1, Natural Gas
Fireplace	Yes
Fireplaces	Brick Facing
Stories	4
Has Basement	Yes
Basement	Full, Finished

Exterior

Exterior	Wood, Brick
Exterior Features	Cul-De-Sac, Fenced, Landscaped, Schools
Roof	Asphalt Shingles
Construction	Wood, Brick
Foundation	Concrete Perimeter

Additional Information

Date Listed April 23rd, 2025

Days on Market 9

Zoning Zone 81

DATA IS DEEMED RELIABLE BUT IS NOT GUARANTEED ACCURATE BY THE REALTORS® ASSOCIATION OF EDMONTON. COPYRIGHT 2025 BY THE REALTORS® ASSOCIATION OF EDMONTON. ALL RIGHTS RESERVED. Trademarks are owned or controlled by the Canadian Real Estate Association (CREA) and identify real estate professionals who are members of CREA (REALTOR®, REALTORS®) and/or the quality of services they provide (MLS®, Multiple Listing Service®)

Listing information last updated on May 2nd, 2025 at 11:03am MDT