

## \$999,900 - 10815 Bearspaw, Edmonton

MLS® #E4433906

**\$999,900**

7 Bedroom, 3.50 Bathroom, 4,373 sqft

Single Family on 0.00 Acres

Bearspaw (Edmonton), Edmonton, AB

Welcome to the real luxury in the premium community of bearspaw. BACKS ONTO LAKE! Breathtaking views of lake and park. This Executive luxury home has all the extras and boasts 7 bedrooms, 3.5 bath, a den/office, a theatre room, large top floor laundry (and basement laundry), 4 fireplaces, air conditioning, a massive upstairs bonus area with big deck upstairs, 2 master bedrooms, a rec room, a double attached garage with big driveway. The home features an open floor plan w loads of natural light and only the best finishes throughout including Brazilian engineered hardwood flooring, genuine slate, tech toilet, spiral staircase, sunroom and more. Gorgeous dream kitchen: very large, quartz counters, huge island, heated floor, Sub-Zero oversize fridge, Jenn-Air stainless steel appliances. The master suite features a fireplace, patio access, ensuite w custom luxury steam shower and Air pressure jacuzzi tub. Amazing Home, Perfect location, this is the finest location in the city.

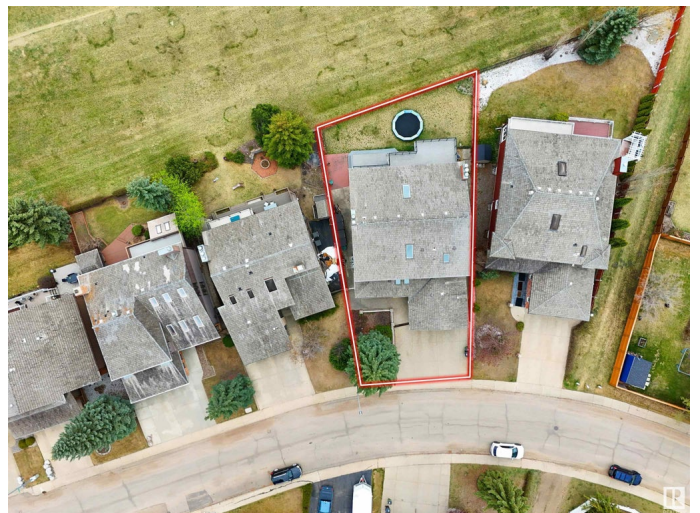
Built in 1983

### Essential Information

MLS® # E4433906

Price \$999,900

Bedrooms 7



|                |                        |
|----------------|------------------------|
| Bathrooms      | 3.50                   |
| Full Baths     | 3                      |
| Half Baths     | 1                      |
| Square Footage | 4,373                  |
| Acres          | 0.00                   |
| Year Built     | 1983                   |
| Type           | Single Family          |
| Sub-Type       | Detached Single Family |
| Style          | 2 Storey               |
| Status         | Active                 |

### Community Information

|             |                     |
|-------------|---------------------|
| Address     | 10815 Bearspaw      |
| Area        | Edmonton            |
| Subdivision | Bearspaw (Edmonton) |
| City        | Edmonton            |
| County      | ALBERTA             |
| Province    | AB                  |
| Postal Code | T6J 5E1             |

### Amenities

|                |   |
|----------------|---|
| Amenities      | Air Conditioner, Bar, Deck, Front Porch, No Animal Home, No Smoking Home, Patio, Sauna; Swirlpool; Steam, Skylight, Social Rooms, Sunroom, Vaulted Ceiling, See Remarks |
| Parking Spaces | 6   |
| Parking        | Double Garage Attached  |
| Is Waterfront  | Yes   |

### Interior

|                   |   |
|-------------------|---|
| Interior Features | ensuite bathroom  |
| Appliances        | Air Conditioning-Central, Compactor, Dishwasher-Built-In, Garage Control, Garburator, Window Coverings, Dryer-Two, Refrigerators-Two, Stoves-Two, Washers-Two |
| Heating           | Forced Air-1, Natural Gas   |
| Stories           | 3   |
| Has Basement      | Yes   |
| Basement          | Full, Finished  |

### Exterior

|                   |   |
|-------------------|---|
| Exterior          | Wood, Brick   |
| Exterior Features | Backs Onto Lake, Backs Onto Park/Trees, Fenced, Low Maintenance Landscape, Playground Nearby, Public Transportation, Schools, Shopping Nearby |
| Roof              | Cedar Shakes  |
| Construction      | Wood, Brick   |
| Foundation        | Concrete Perimeter  |

**Additional Information**

|                |               |
|----------------|---------------|
| Date Listed    | May 1st, 2025 |
| Days on Market | 72            |
| Zoning         | Zone 16       |

DATA IS DEEMED RELIABLE BUT IS NOT GUARANTEED ACCURATE BY THE REALTORS® ASSOCIATION OF EDMONTON. COPYRIGHT 2025 BY THE REALTORS® ASSOCIATION OF EDMONTON. ALL RIGHTS RESERVED.Trademarks are owned or controlled by the Canadian Real Estate Association (CREA) and identify real estate professionals who are members of CREA (REALTOR®, REALTORS®) and/or the quality of services they provide (MLS®, Multiple Listing Service®)

Listing information last updated on July 12th, 2025 at 7:02pm MDT