

\$389,900 - 1405 10649 Saskatchewan Drive, Edmonton

MLS® #E4435428

\$389,900

2 Bedroom, 2.00 Bathroom, 985 sqft

Condo / Townhouse on 0.00 Acres

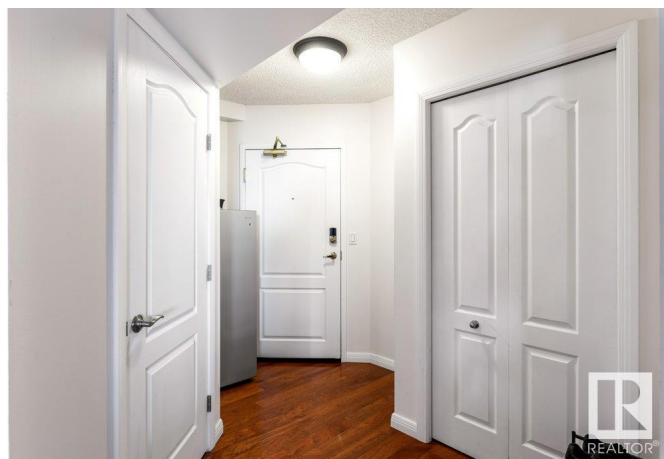
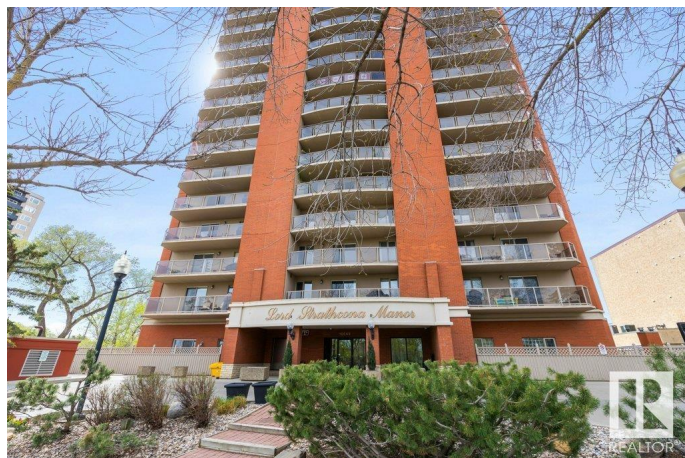
Strathcona, Edmonton, AB

MILLION DOLLAR VIEW on SASKATCHEWAN DRIVE! 14th floor, 2 BED, 2 BATH CORNER UNIT extensively upgraded with air conditioning, 2 Titled underground parking stalls, 2 balconies & Titled storage unit! Hardwood floors throughout, Titanium Granite counters, Solid dark cherry cabinets, new modern fireplace, Gorgeous En Suite with STEAM SHOWER. Large dining nook to fit table, access to private balcony to enjoy your morning sunrise coffee with natural gas BBQ hook up! 2 Spacious bedrooms with built in custom California Closet organizers, includes a master with 4 pce ensuite & double closets with access to a private south facing balcony! This unit features 2 heated underground titled stalls with bike storage. All conveniently located close to Whyte Ave, Downtown, river valley trails, restaurants & public transportation!

Built in 1999

Essential Information

| | |
|----------------|-----------|
| MLS® # | E4435428 |
| Price | \$389,900 |
| Bedrooms | 2 |
| Bathrooms | 2.00 |
| Full Baths | 2 |
| Square Footage | 985 |



| | |
|------------|------------------------|
| Acres | 0.00 |
| Year Built | 1999 |
| Type | Condo / Townhouse |
| Sub-Type | Apartment High Rise |
| Style | Single Level Apartment |
| Status | Active |

Community Information

| | |
|-------------|-------------------------------|
| Address | 1405 10649 Saskatchewan Drive |
| Area | Edmonton |
| Subdivision | Strathcona |
| City | Edmonton |
| County | ALBERTA |
| Province | AB |
| Postal Code | T6E 6S8 |

Amenities

| | |
|-----------|--|
| Amenities | Closet Organizers, Deck, Exercise Room, Intercom, Parking-Visitor, Secured Parking |
| Parking | Heated, Parkade, Underground |

Interior

| | |
|-------------------|---|
| Interior Features | ensuite bathroom |
| Appliances | Dishwasher-Built-In, Microwave Hood Fan, Refrigerator, Stacked Washer/Dryer, Stove-Electric, Window Coverings |
| Heating | Heat Pump, Natural Gas |
| Fireplace | Yes |
| Fireplaces | Corner |
| # of Stories | 17 |
| Stories | 1 |
| Has Basement | Yes |
| Basement | None, No Basement |

Exterior

| | |
|-------------------|--|
| Exterior | Concrete, Brick |
| Exterior Features | Golf Nearby, Landscaped, Park/Reserve, Picnic Area, Playground Nearby, Public Swimming Pool, Public Transportation, River Valley View, Schools, Shopping Nearby, View Downtown |
| Roof | Tar & Gravel |

| | |
|--------------|--------------------|
| Construction | Concrete, Brick |
| Foundation | Concrete Perimeter |

School Information

| | |
|------------|------------|
| Elementary | Garneau |
| Middle | Mckernan |
| High | Strathcona |

Additional Information

| | |
|----------------|---------------|
| Date Listed | May 9th, 2025 |
| Days on Market | 64 |
| Zoning | Zone 15 |
| Condo Fee | \$719 |

DATA IS DEEMED RELIABLE BUT IS NOT GUARANTEED ACCURATE BY THE REALTORS® ASSOCIATION OF EDMONTON. COPYRIGHT 2025 BY THE REALTORS® ASSOCIATION OF EDMONTON. ALL RIGHTS RESERVED.Trademarks are owned or controlled by the Canadian Real Estate Association (CREA) and identify real estate professionals who are members of CREA (REALTOR®, REALTORS®) and/or the quality of services they provide (MLS®, Multiple Listing Service®)

Listing information last updated on July 12th, 2025 at 2:02am MDT