

\$475,000 - 6655 Cardinal Road, Edmonton

MLS® #E4436428

\$475,000

3 Bedroom, 2.50 Bathroom, 1,546 sqft

Single Family on 0.00 Acres

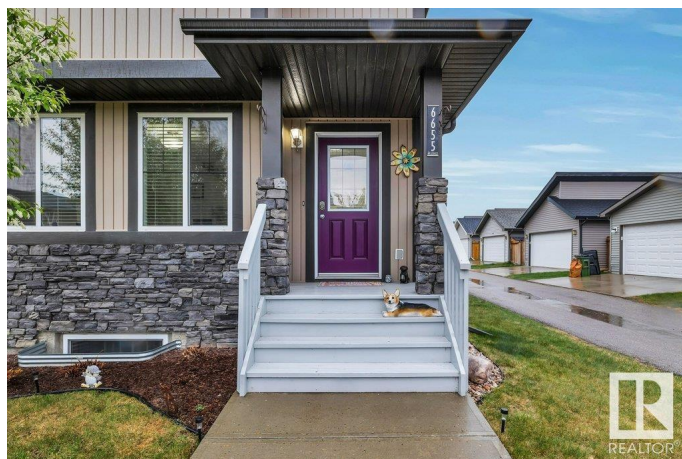
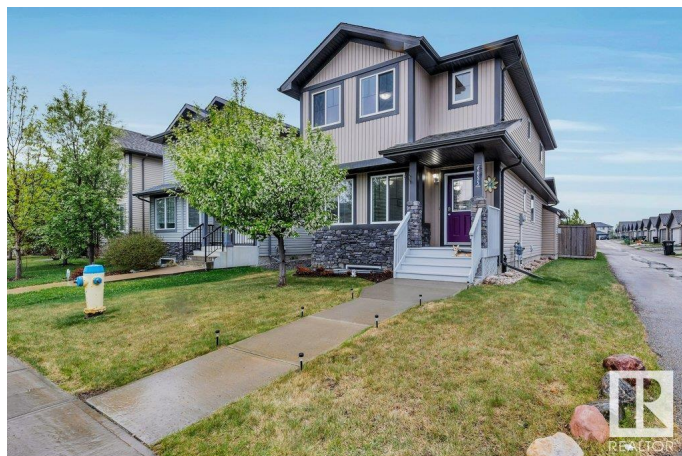
Chappelle Area, Edmonton, AB

Picture Perfect! You will be delighted the minute you pull up to this well maintained family home! Offering 3 bedrooms, 3 bathrooms, a wonderful main floor layout with hardwood flooring leading to front flex room (home office, playroom you decide), gorgeous kitchen with sleek dark cabinetry, extended eating bar, stainless appliances open to the cozy living room with GAS burning fireplace and big window to the back yard, completing the main floor is a convenient half bath, upper level offers large primary with 2 big windows, walk in closet and 3 piece ensuite, 2 additional bedrooms share a full 4 piece bath, laundry room with stacked washer and dryer complete the upper level, fully fenced and landscaped back yard with double detached garage. Don't wait on this one! Close to major amenities, schools, shopping and connecting routes.

Built in 2012

Essential Information

MLS® #	E4436428
Price	\$475,000
Bedrooms	3
Bathrooms	2.50
Full Baths	2
Half Baths	1
Square Footage	1,546



Acres	0.00
Year Built	2012
Type	Single Family
Sub-Type	Detached Single Family
Style	2 Storey
Status	Active

Community Information

Address	6655 Cardinal Road
Area	Edmonton
Subdivision	Chappelle Area
City	Edmonton
County	ALBERTA
Province	AB
Postal Code	T6W 1Y8

Amenities

Amenities	Off Street Parking, On Street Parking, Air Conditioner, Vinyl Windows
Parking	Double Garage Detached

Interior

Interior Features	ensuite bathroom
Appliances	Air Conditioning-Central, Dishwasher-Built-In, Dryer, Microwave Hood Fan, Refrigerator, Stove-Electric, Washer, Window Coverings
Heating	Forced Air-1, Natural Gas
Fireplaces	Glass Door
Stories	2
Has Basement	Yes
Basement	Full, Unfinished

Exterior

Exterior	Wood, Vinyl
Exterior Features	Back Lane, Fenced, Landscaped, Playground Nearby, Schools, Shopping Nearby
Roof	Asphalt Shingles
Construction	Wood, Vinyl
Foundation	Concrete Perimeter

School Information

Elementary	Garth Worthington School
Middle	Garth Worthington School
High	Dr. Anne Anderson School

Additional Information

Date Listed	May 14th, 2025
Days on Market	10
Zoning	Zone 55
HOA Fees	100
HOA Fees Freq.	Annually

DATA IS DEEMED RELIABLE BUT IS NOT GUARANTEED ACCURATE BY THE REALTORS® ASSOCIATION OF EDMONTON. COPYRIGHT 2025 BY THE REALTORS® ASSOCIATION OF EDMONTON. ALL RIGHTS RESERVED.Trademarks are owned or controlled by the Canadian Real Estate Association (CREA) and identify real estate professionals who are members of CREA (REALTOR®, REALTORS®) and/or the quality of services they provide (MLS®, Multiple Listing Service®)

Listing information last updated on May 24th, 2025 at 10:32am MDT