

\$670,000 - 10358 146 Street, Edmonton

MLS® #E4436677

\$670,000

4 Bedroom, 3.50 Bathroom, 1,830 sqft

Single Family on 0.00 Acres

Grovenor, Edmonton, AB

Built by Novesta Homes, this beautifully crafted property combines modern design & quality construction in the mature, family-friendly neighborhood of Grovenor. Step inside & enjoy 10ft ceilings and oversized TRIPLE PANE windows that fill the home with natural light. The open-concept kitchen is a true highlight featuring a large island, QUARTZ countertops & stainless steel Frigidaire Gallery appliances. This 4bdrm home built for comfort & function features double 2x6 insulated party walls providing OUTSTANDING SOUNDPROOFING, oversized walk-in pantry, built-in shelving throughout, AIR-CONDITIONING, custom blinds, curbless shower and luxurious SOAKER TUB in the primary. The heated, insulated double garage is already wired for an EV CHARGER. From premium finishes to practical upgrades, this home offers more than just style - it stands apart from cookie-cutter construction, offering character, durability and a true sense of home. Some pictures have been virtually staged

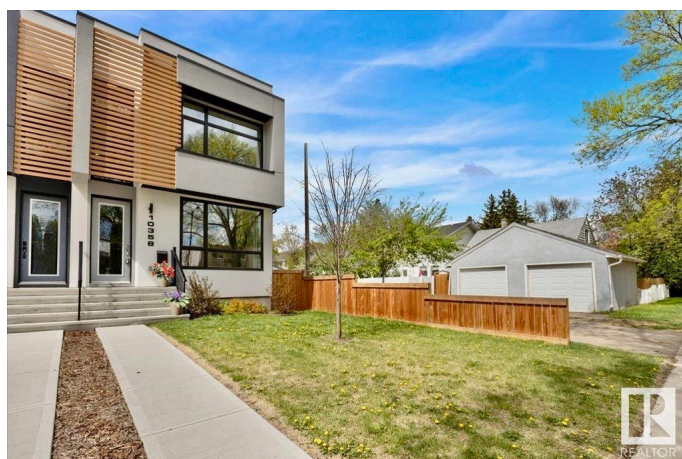
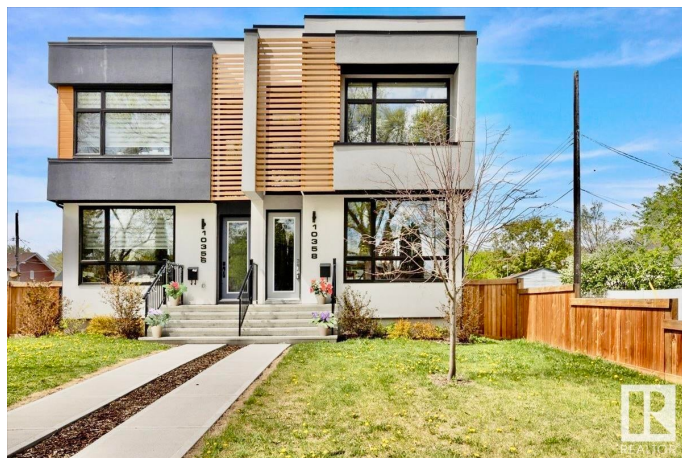
Built in 2019

Essential Information

MLS® # E4436677

Price \$670,000

Bedrooms 4



Bathrooms	3.50
Full Baths	3
Half Baths	1
Square Footage	1,830
Acres	0.00
Year Built	2019
Type	Single Family
Sub-Type	Half Duplex
Style	2 Storey
Status	Active

Community Information

Address	10358 146 Street
Area	Edmonton
Subdivision	Grovenor
City	Edmonton
County	ALBERTA
Province	AB
Postal Code	T5N 3A2

Amenities

Amenities	On Street Parking, Air Conditioner, Ceiling 10 ft., Ceiling 9 ft., Closet Organizers, Deck, No Animal Home, No Smoking Home, Smart/Program. Thermostat, Infill Property, HRV System
Parking	Double Garage Detached

Interior

Interior Features	ensuite bathroom
Appliances	Air Conditioning-Central, Dishwasher-Built-In, Dryer, Garage Control, Garage Opener, Hood Fan, Oven-Built-In, Oven-Microwave, Refrigerator, Stove-Countertop Gas, Washer
Heating	Forced Air-1, Natural Gas
Fireplace	Yes
Fireplaces	Heatilator/Fan, Tile Surround
Stories	3
Has Basement	Yes
Basement	Full, Finished

Exterior

Exterior	Wood, Metal, Stucco
Exterior Features	Back Lane, Fenced, Flat Site, Landscaped, Playground Nearby, Public Transportation, Schools, Shopping Nearby
Roof	Asphalt Shingles
Construction	Wood, Metal, Stucco
Foundation	Concrete Perimeter

Additional Information

Date Listed	May 15th, 2025
Days on Market	2
Zoning	Zone 21

DATA IS DEEMED RELIABLE BUT IS NOT GUARANTEED ACCURATE BY THE REALTORS® ASSOCIATION OF EDMONTON. COPYRIGHT 2025 BY THE REALTORS® ASSOCIATION OF EDMONTON. ALL RIGHTS RESERVED. Trademarks are owned or controlled by the Canadian Real Estate Association (CREA) and identify real estate professionals who are members of CREA (REALTOR®, REALTORS®) and/or the quality of services they provide (MLS®, Multiple Listing Service®)

Listing information last updated on May 17th, 2025 at 4:32pm MDT