

\$595,000 - 1939 210 Street, Edmonton

MLS® #E4437311

\$595,000

5 Bedroom, 4.00 Bathroom, 1,583 sqft

Single Family on 0.00 Acres

Stillwater, Edmonton, AB

Investors and savvy homebuyers â€™ welcome to your ideal property in the thriving community of Stillwater! This brand-new, fully detached home offers exceptional versatility with a TWO-BEDROOM LEGAL SUITE, a MAIN-FLOOR FULL BATHROOM, and a MAIN-FLOOR HOME OFFICE â€™ perfect for working from home or accommodating an elderly family member with ease. Upstairs, you'll find three spacious bedrooms, two full bathrooms, including a luxurious 5-piece ensuite, and a generous walk-in closet in the primary suite. A bonus room and a convenient upstairs laundry complete the second floor.

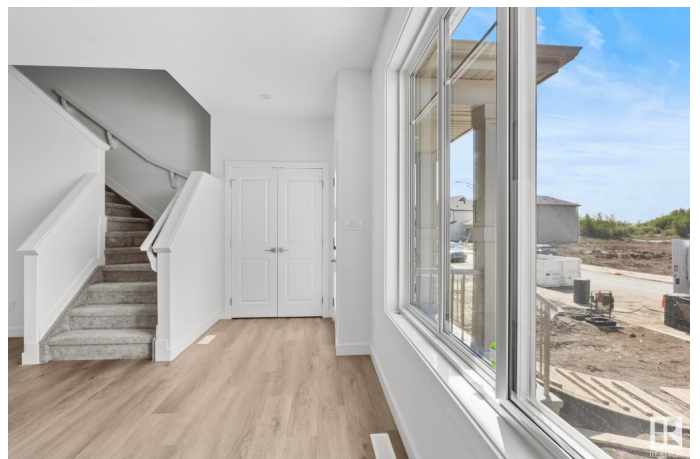
The legal basement suite features two additional bedrooms, a separate side entrance, and a full kitchen and bath â€™ ideal for long-term rental income or Airbnb potential.

Located just minutes from Costco, River Cree Resort & Casino, and West Edmonton Mall, this home combines smart investment potential with modern family living.

Built in 2025

Essential Information

MLS® #	E4437311
Price	\$595,000
Bedrooms	5
Bathrooms	4.00



Full Baths	4
Square Footage	1,583
Acres	0.00
Year Built	2025
Type	Single Family
Sub-Type	Detached Single Family
Style	2 Storey
Status	Active

Community Information

Address	1939 210 Street
Area	Edmonton
Subdivision	Stillwater
City	Edmonton
County	ALBERTA
Province	AB
Postal Code	T6M 3H5

Amenities

Amenities	Carbon Monoxide Detectors, Ceiling 9 ft., Hot Water Instant, No Animal Home, No Smoking Home
Parking	Double Garage Detached

Interior

Interior Features	ensuite bathroom
Appliances	Garage Control, Garage Opener, Builder Appliance Credit
Heating	Forced Air-1, Natural Gas
Fireplace	Yes
Fireplaces	Insert
Stories	3
Has Suite	Yes
Has Basement	Yes
Basement	Full, Finished

Exterior

Exterior	Wood, Vinyl
Exterior Features	Flat Site, Level Land, Low Maintenance Landscape
Roof	Asphalt Shingles
Construction	Wood, Vinyl

Foundation Concrete Perimeter

School Information

Elementary Ormsby School
Middle S. Bruce Smith School
High Jasper Place School

Additional Information

Date Listed May 19th, 2025
Days on Market 16
Zoning Zone 57

DATA IS DEEMED RELIABLE BUT IS NOT GUARANTEED ACCURATE BY THE REALTORS® ASSOCIATION OF EDMONTON. COPYRIGHT 2025 BY THE REALTORS® ASSOCIATION OF EDMONTON. ALL RIGHTS RESERVED.Trademarks are owned or controlled by the Canadian Real Estate Association (CREA) and identify real estate professionals who are members of CREA (REALTOR®, REALTORS®) and/or the quality of services they provide (MLS®, Multiple Listing Service®)
Listing information last updated on June 4th, 2025 at 3:33pm MDT