

\$425,000 - 1826 Rutherford Road, Edmonton

MLS® #E4438321

\$425,000

3 Bedroom, 2.50 Bathroom, 1,421 sqft

Single Family on 0.00 Acres

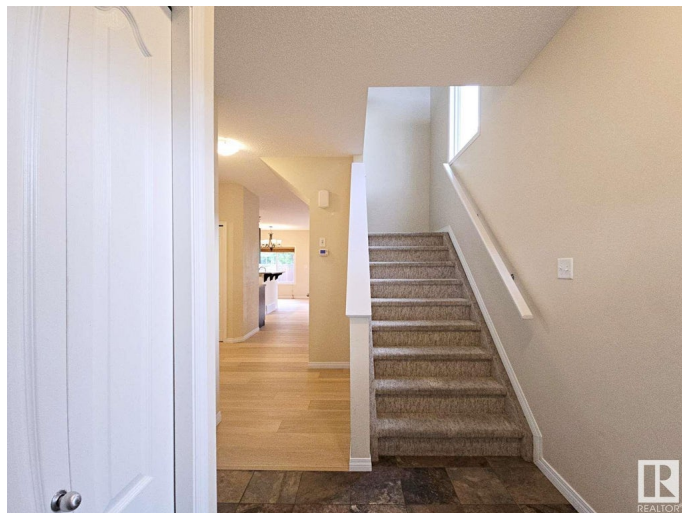
Rutherford (Edmonton), Edmonton, AB

This 1,421 sq. ft. 2-storey half duplex is ideally located in the welcoming community of Rutherford. The open-concept main floor features 9' ceilings, high-end engineered oak flooring, and a sleek kitchen with brand new stainless steel appliances, a pantry, and an eat-up bar. Bright living and dining areas are filled with natural light and open onto a private back deckâ€”perfect for relaxing or entertaining. Upstairs offers a spacious primary suite with a walk-in closet and 3-piece ensuite, two additional bedrooms, a full bath, and a flexible bonus room. Additional highlights include a single attached garage that fits a vehicle up to 210 inches and a prime locationâ€”walking distance to public and Catholic Kâ€”9 schools, close to parks, trails, shopping, and with quick access to Anthony Henday and the airport.

Built in 2013

Essential Information

MLS® #	E4438321
Price	\$425,000
Bedrooms	3
Bathrooms	2.50
Full Baths	2
Half Baths	1
Square Footage	1,421



Acres	0.00
Year Built	2013
Type	Single Family
Sub-Type	Half Duplex
Style	2 Storey
Status	Active

Community Information

Address	1826 Rutherford Road
Area	Edmonton
Subdivision	Rutherford (Edmonton)
City	Edmonton
County	ALBERTA
Province	AB
Postal Code	T6W 0Z8

Amenities

Amenities	Ceiling 9 ft., Deck, Exterior Walls- 2"x6"
Parking	Single Garage Attached

Interior

Interior Features	ensuite bathroom
Appliances	Dishwasher-Built-In, Dryer, Garage Opener, Microwave Hood Fan, Refrigerator, Stove-Electric, Washer
Heating	Forced Air-1, Natural Gas
Stories	2
Has Basement	Yes
Basement	Full, Unfinished

Exterior

Exterior	Wood, Vinyl
Exterior Features	Airport Nearby, Fenced, Flat Site, Schools, Shopping Nearby
Roof	Asphalt Shingles
Construction	Wood, Vinyl
Foundation	Concrete Perimeter

Additional Information

Date Listed	May 23rd, 2025
Days on Market	1

Zoning

Zone 55

DATA IS DEEMED RELIABLE BUT IS NOT GUARANTEED ACCURATE BY THE REALTORS® ASSOCIATION OF EDMONTON. COPYRIGHT 2025 BY THE REALTORS® ASSOCIATION OF EDMONTON. ALL RIGHTS RESERVED. Trademarks are owned or controlled by the Canadian Real Estate Association (CREA) and identify real estate professionals who are members of CREA (REALTOR®, REALTORS®) and/or the quality of services they provide (MLS®, Multiple Listing Service®)

Listing information last updated on May 24th, 2025 at 8:17pm MDT