

## \$748,000 - 10205 137 Street, Edmonton

MLS® #E4438823

**\$748,000**

3 Bedroom, 3.00 Bathroom, 2,468 sqft

Single Family on 0.00 Acres

Glenora, Edmonton, AB

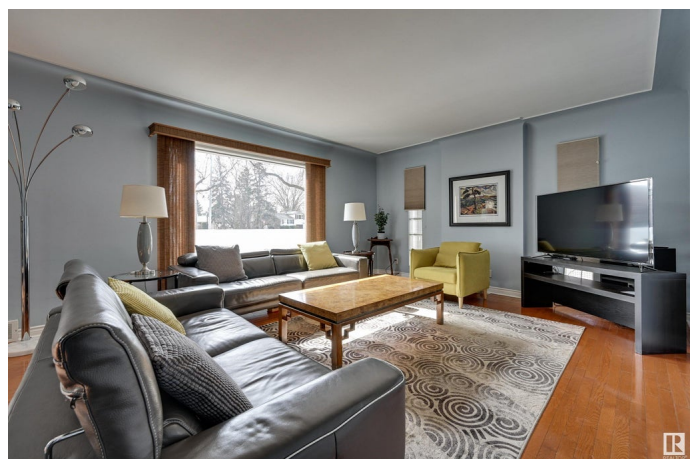
PRICED JUST REDUCED \$50,000 Nestled in the coveted neighborhood of Glenora, this inviting 2-storey home effortlessly combines classic charm with modern upgrades. With energy-efficient TRIPLE PANE windows, this bright and airy residence floods with natural light year-round, creating a peaceful and welcoming atmosphere. Step inside to discover gleaming hardwood floors throughout, leading to a spacious, updated kitchen, featuring contemporary appliances, sleek cabinetry, and elegant countertops, it's perfect for both everyday meals and entertaining guests. Upstairs, you'll find generously-sized bedrooms, each with large windows that bathe the rooms in sunshine and provide a tranquil retreat. Take your relaxation outdoors to the private rooftop deck, an ideal spot for sipping your morning coffee or unwinding in the evening. The fully fenced backyard is a gardener's oasis, with mature plantings and plenty of space for outdoor activities. Recent upgrades include 3 zoned furnace system (2019), driveway (2017).

Built in 1949

### Essential Information

MLS® # E4438823

Price \$748,000



Bedrooms	3
Bathrooms	3.00
Full Baths	2
Half Baths	2
Square Footage	2,468
Acres	0.00
Year Built	1949
Type	Single Family
Sub-Type	Detached Single Family
Style	2 Storey
Status	Active

### Community Information

Address	10205 137 Street
Area	Edmonton
Subdivision	Glenora
City	Edmonton
County	ALBERTA
Province	AB
Postal Code	T5N 2G8

### Amenities

Amenities	Deck, Hot Tub, No Smoking Home, Rooftop Deck/Patio
Parking	Double Garage Attached

### Interior

Interior Features	ensuite bathroom
Appliances	Dishwasher-Built-In, Dryer, Garage Opener, Stove-Gas, Washer, Wine/Beverage Cooler, Refrigerators-Two
Heating	Forced Air-1, Natural Gas
Stories	3
Has Basement	Yes
Basement	Full, Finished

### Exterior

Exterior	Wood, Vinyl
Exterior Features	Back Lane, Fenced, Flat Site, Fruit Trees/Shrubs, Landscaped, Playground Nearby, Schools, Shopping Nearby
Roof	Asphalt Shingles, EPDM Membrane

Construction	Wood, Vinyl
Foundation	Concrete Perimeter

**Additional Information**

Date Listed	May 28th, 2025
Days on Market	6
Zoning	Zone 11

DATA IS DEEMED RELIABLE BUT IS NOT GUARANTEED ACCURATE BY THE REALTORS® ASSOCIATION OF EDMONTON. COPYRIGHT 2025 BY THE REALTORS® ASSOCIATION OF EDMONTON. ALL RIGHTS RESERVED.Trademarks are owned or controlled by the Canadian Real Estate Association (CREA) and identify real estate professionals who are members of CREA (REALTOR®, REALTORS®) and/or the quality of services they provide (MLS®, Multiple Listing Service®)

Listing information last updated on June 2nd, 2025 at 10:02pm MDT