

\$82,000 - 207 9028 Jasper Avenue, Edmonton

MLS® #E4439222

\$82,000

1 Bedroom, 1.00 Bathroom, 669 sqft

Condo / Townhouse on 0.00 Acres

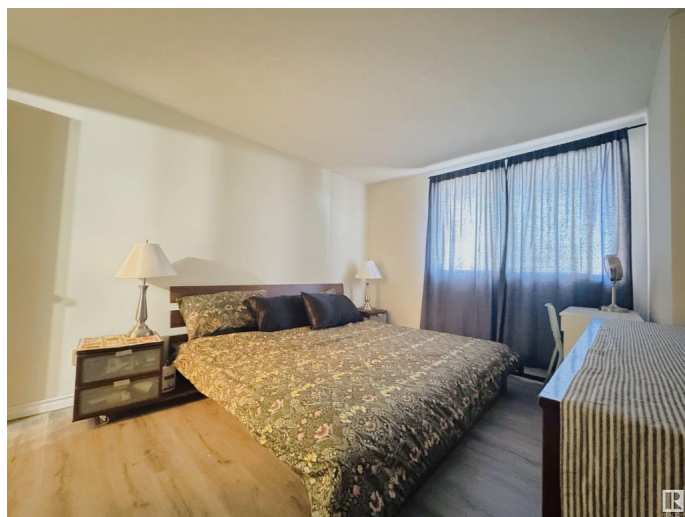
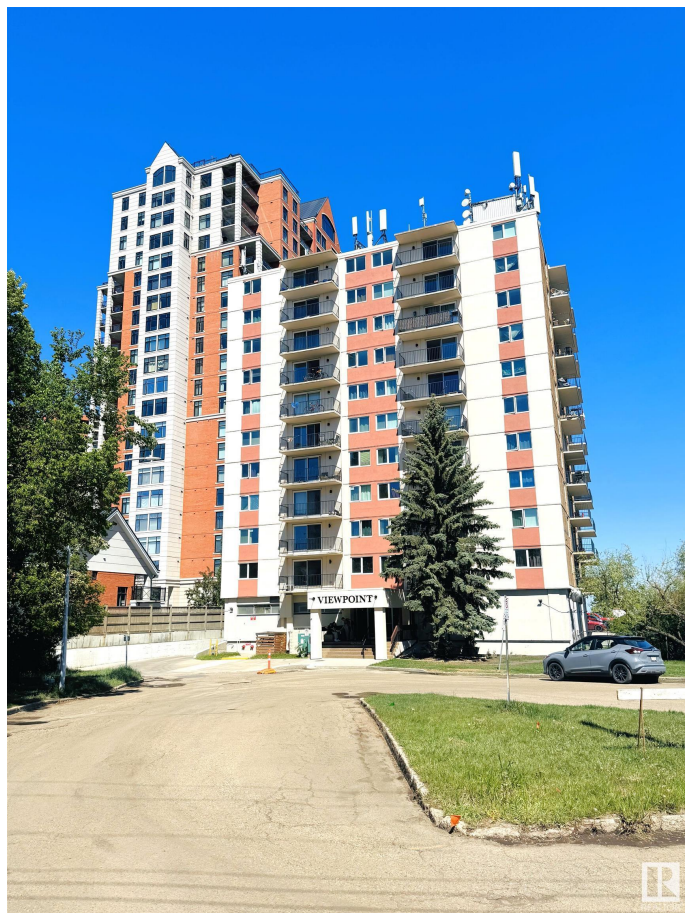
Boyle Street, Edmonton, AB

Prime Downtown Location! This bright and spacious 1-bedroom, 1-bath condo offers incredible value with recently updated flooring and sweeping River Valley views. Perfect for first-time buyers, students, professionals, or investors. Enjoy peace of mind with all utilities included â€“HEAT, WATER & ELECTRICITYâ€“ plus the bonus of underground parking and a secure storage space. Steps from the Ice District, LRT, shopping, dining, nightlife, and River Valley trails. A fantastic opportunity in one of Edmontonâ€™s most desirable central communities.

Built in 1971

Essential Information

MLS® #	E4439222
Price	\$82,000
Bedrooms	1
Bathrooms	1.00
Full Baths	1
Square Footage	669
Acres	0.00
Year Built	1971
Type	Condo / Townhouse
Sub-Type	Apartment High Rise
Style	Single Level Apartment
Status	Active



Community Information

Address	207 9028 Jasper Avenue
Area	Edmonton
Subdivision	Boyle Street
City	Edmonton
County	ALBERTA
Province	AB
Postal Code	T5H 3Y6

Amenities

Amenities	See Remarks
Parking	Underground

Interior

Appliances	Refrigerator, Stove-Electric
Heating	Baseboard, Electric
# of Stories	11
Stories	1
Has Basement	Yes
Basement	None, No Basement

Exterior

Exterior	Concrete
Exterior Features	River View, Schools, Shopping Nearby, View Downtown
Roof	Tar & Gravel
Construction	Concrete
Foundation	Concrete Perimeter

Additional Information

Date Listed	May 29th, 2025
Days on Market	74
Zoning	Zone 13
Condo Fee	\$642

DATA IS DEEMED RELIABLE BUT IS NOT GUARANTEED ACCURATE BY THE REALTORS® ASSOCIATION OF EDMONTON. COPYRIGHT 2025 BY THE REALTORS® ASSOCIATION OF EDMONTON. ALL RIGHTS RESERVED. Trademarks are owned or controlled by the Canadian Real Estate Association (CREA) and identify real estate professionals who are members of CREA (REALTOR®, REALTORS®) and/or the quality of services they provide (MLS®, Multiple Listing Service®)

Listing information last updated on August 11th, 2025 at 2:17pm MDT