

\$659,000 - 137 Dechene Road, Edmonton

MLS® #E4440444

\$659,000

5 Bedroom, 3.50 Bathroom, 2,423 sqft
Single Family on 0.00 Acres

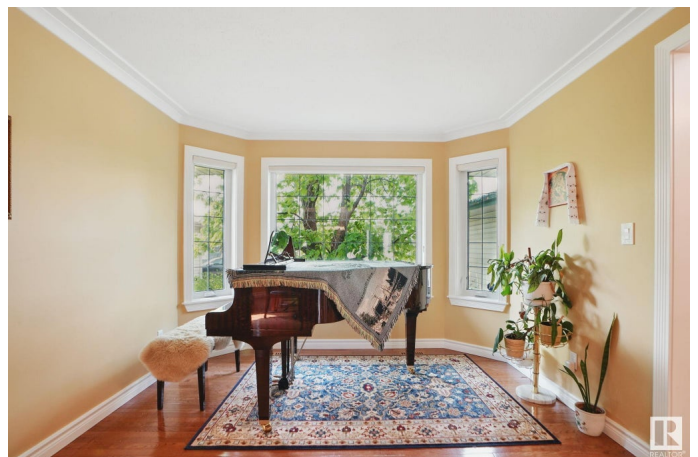
Dechene, Edmonton, AB

Located in the desirable community of Dechene. This home with a large, parklike yard is located on a cul de sac, a stone's throw from excellent schooling (K-9) and minutes from the closest high school, transportation and shopping. This **SUBSTANTIALLY RENOVATED** home is better than when it's newer upgrades include: gourmet kitchen with island and granite counter tops, beautifully redone bathrooms, windows, shingles, furnace, attic insulation, central air conditioning, window coverings, sprinkler system and more. There is gleaming hardwood on main (plus upper hallways), crown moldings, a heated garage, etc.! With a total of five bedrooms plus a main floor den, 3 ½ bathrooms, a fully finished basement and more this meticulously kept home is ideal for a family and move in ready.

Built in 1996

Essential Information

MLS® #	E4440444
Price	\$659,000
Bedrooms	5
Bathrooms	3.50
Full Baths	3
Half Baths	1
Square Footage	2,423



Acres	0.00
Year Built	1996
Type	Single Family
Sub-Type	Detached Single Family
Style	2 Storey
Status	Active

Community Information

Address	137 Dechene Road
Area	Edmonton
Subdivision	Dechene
City	Edmonton
County	ALBERTA
Province	AB
Postal Code	T6M 2N1

Amenities

Amenities	Air Conditioner, Deck, Detectors Smoke, No Animal Home, No Smoking Home, Smart/Program. Thermostat, Sprinkler Sys-Underground, See Remarks
Parking	Double Garage Attached

Interior

Interior Features	ensuite bathroom
Appliances	Air Conditioning-Central, Dishwasher-Built-In, Dryer, Garage Control, Garage Opener, Garburator, Microwave Hood Fan, Refrigerator, Storage Shed, Stove-Gas, Vacuum System Attachments
Heating	Forced Air-1, Natural Gas
Fireplace	Yes
Fireplaces	Masonry
Stories	3
Has Basement	Yes
Basement	Full, Finished

Exterior

Exterior	Wood, Brick, Vinyl
Exterior Features	Cul-De-Sac, Fenced, Flat Site, Golf Nearby, Playground Nearby, Public Transportation, Schools, Shopping Nearby, See Remarks
Roof	Asphalt Shingles
Construction	Wood, Brick, Vinyl

Foundation Concrete Perimeter

Additional Information

Date Listed June 5th, 2025

Days on Market 38

Zoning Zone 20

DATA IS DEEMED RELIABLE BUT IS NOT GUARANTEED ACCURATE BY THE REALTORS® ASSOCIATION OF EDMONTON. COPYRIGHT 2025 BY THE REALTORS® ASSOCIATION OF EDMONTON. ALL RIGHTS RESERVED.Trademarks are owned or controlled by the Canadian Real Estate Association (CREA) and identify real estate professionals who are members of CREA (REALTOR®, REALTORS®) and/or the quality of services they provide (MLS®, Multiple Listing Service®)

Listing information last updated on July 13th, 2025 at 7:02pm MDT