

## \$420,000 - 12432 125 Street, Edmonton

MLS® #E4440608

**\$420,000**

4 Bedroom, 3.50 Bathroom, 1,464 sqft

Single Family on 0.00 Acres

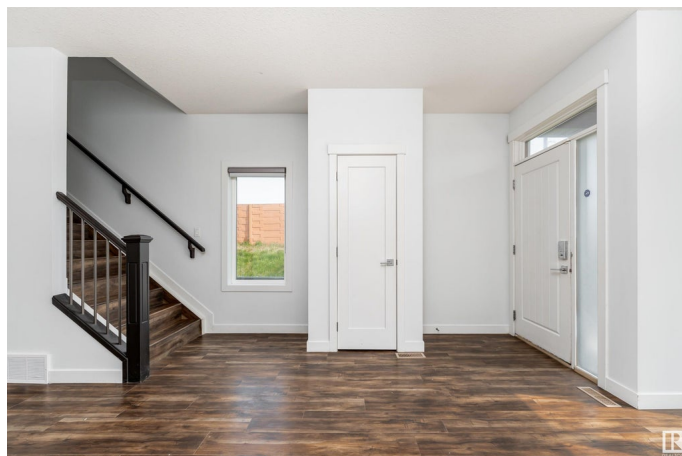
Prince Charles, Edmonton, AB

Welcome to this beautifully maintained half duplex offering spacious and functional living across three levels. The main floor greets you with a bright and open living room, a generous dining area, and a modern kitchen featuring stainless steel appliances, ample counter space, a pantry, and plenty of cabinetry. A convenient 2-piece bathroom completes the main level. Upstairs, you'll find a spacious primary bedroom with a 5-piece ensuite and a walk-in closet. Two additional bedrooms, a 4-piece bathroom, and a dedicated laundry room provide comfort and convenience for the whole family. The basement offers great flexibility with a large recreation room, a second kitchen, a 4-piece bathroom, a laundry area, and a bedroom – ideal for extended family or guests.

Built in 2015

### Essential Information

MLS® #	E4440608
Price	\$420,000
Bedrooms	4
Bathrooms	3.50
Full Baths	3
Half Baths	1
Square Footage	1,464
Acres	0.00



Year Built	2015
Type	Single Family
Sub-Type	Half Duplex
Style	2 Storey
Status	Active

### Community Information

Address	12432 125 Street
Area	Edmonton
Subdivision	Prince Charles
City	Edmonton
County	ALBERTA
Province	AB
Postal Code	T5L 0T1

### Amenities

Amenities	Ceiling 9 ft., Deck, Detectors Smoke
Parking Spaces	4
Parking	Single Garage Detached

### Interior

Interior Features	ensuite bathroom
Appliances	Dishwasher-Built-In, Garage Control, Garage Opener, Dryer-Two, Refrigerators-Two, Stoves-Two, Washers-Two, Microwave Hood Fan-Two
Heating	Forced Air-1, Natural Gas
Stories	3
Has Basement	Yes
Basement	Full, Finished

### Exterior

Exterior	Wood, Stone, Vinyl
Exterior Features	Cul-De-Sac, Fenced, Flat Site, Landscaped, Playground Nearby, Schools
Roof	Asphalt Shingles
Construction	Wood, Stone, Vinyl
Foundation	Concrete Perimeter

### Additional Information

Date Listed	June 5th, 2025
-------------	----------------

Days on Market 16

Zoning Zone 04

DATA IS DEEMED RELIABLE BUT IS NOT GUARANTEED ACCURATE BY THE REALTORS® ASSOCIATION OF EDMONTON. COPYRIGHT 2025 BY THE REALTORS® ASSOCIATION OF EDMONTON. ALL RIGHTS RESERVED. Trademarks are owned or controlled by the Canadian Real Estate Association (CREA) and identify real estate professionals who are members of CREA (REALTOR®, REALTORS®) and/or the quality of services they provide (MLS®, Multiple Listing Service®)

Listing information last updated on June 21st, 2025 at 1:32am MDT