

\$948,800 - 892 Hollands Landing, Edmonton

MLS® #E4441124

\$948,800

5 Bedroom, 3.50 Bathroom, 3,028 sqft

Single Family on 0.00 Acres

Hodgson, Edmonton, AB

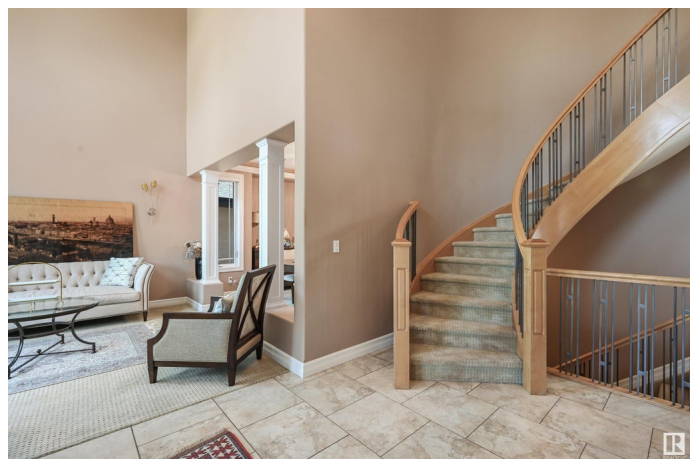
Stunning, beautifully maintained custom Fekete built home in the prestigious Estates of Whitemud Ridge. Located just a stone's throw from the Ravine/trails & park/playground. 3028 sf open floor plan w/a sweeping curved stairwells, 18 ft ceilings & large windows which allow streams of natural light in. Beautiful finishes & upgrades- Granite wet bar, in floor heating, steam showers & so much more. Formal living/dining rm plus a main floor den & family rm w/soaring vaults. New carpet FR/den. 4 Spacious bedrms upstairs & 2 more in the professionally finished lower level along w/a rec rm & full bathrm). Gorgeous master suite w/a huge W/I closet, FP & dream spa ensuite. A/C & TRIPLE finished garage which features a rear garage overhead door for access to an aggregate pad for additional storage of boats, ATV or a small trailer. Beautiful private treed SW facing yard w/a waterfall & pond. Lots of space to entertain outdoors. Quick access to shopping, schools & the Rec Centre. Easy access to U of A & downtown

Built in 2004

Essential Information

MLS® # E4441124

Price \$948,800



Bedrooms	5
Bathrooms	3.50
Full Baths	3
Half Baths	1
Square Footage	3,028
Acres	0.00
Year Built	2004
Type	Single Family
Sub-Type	Detached Single Family
Style	2 Storey
Status	Active

Community Information

Address	892 Hollands Landing
Area	Edmonton
Subdivision	Hodgson
City	Edmonton
County	ALBERTA
Province	AB
Postal Code	T6R 3L2

Amenities

Amenities	Deck, Detectors Smoke
Parking	Insulated, Triple Garage Attached

Interior

Interior Features	ensuite bathroom
Appliances	Dishwasher-Built-In, Dryer, Garage Opener, Refrigerator, Storage Shed, Stove-Gas, Vacuum Systems, Washer
Heating	Forced Air-2, In Floor Heat System, Natural Gas
Fireplace	Yes
Fireplaces	Three Sided
Stories	3
Has Basement	Yes
Basement	Full, Finished

Exterior

Exterior	Wood, Stone, Stucco
Exterior Features	Fenced, Landscaped, No Back Lane, Public Transportation, Schools,

	Shopping Nearby
Roof	Asphalt Shingles
Construction	Wood, Stone, Stucco
Foundation	Concrete Perimeter

School Information

Elementary	JosephMacneil/Brander
Middle	JosephMacneil/Riverbend
High	MMM/LillianOsborne

Additional Information

Date Listed	June 6th, 2025
Days on Market	10
Zoning	Zone 14
HOA Fees	175
HOA Fees Freq.	Annually

DATA IS DEEMED RELIABLE BUT IS NOT GUARANTEED ACCURATE BY THE REALTORS® ASSOCIATION OF EDMONTON. COPYRIGHT 2025 BY THE REALTORS® ASSOCIATION OF EDMONTON. ALL RIGHTS RESERVED.Trademarks are owned or controlled by the Canadian Real Estate Association (CREA) and identify real estate professionals who are members of CREA (REALTOR®, REALTORS®) and/or the quality of services they provide (MLS®, Multiple Listing Service®)

Listing information last updated on June 16th, 2025 at 12:47pm MDT