

\$329,900 - 10 13810 166 Avenue, Edmonton

MLS® #E4441410

\$329,900

2 Bedroom, 2.50 Bathroom, 1,273 sqft

Condo / Townhouse on 0.00 Acres

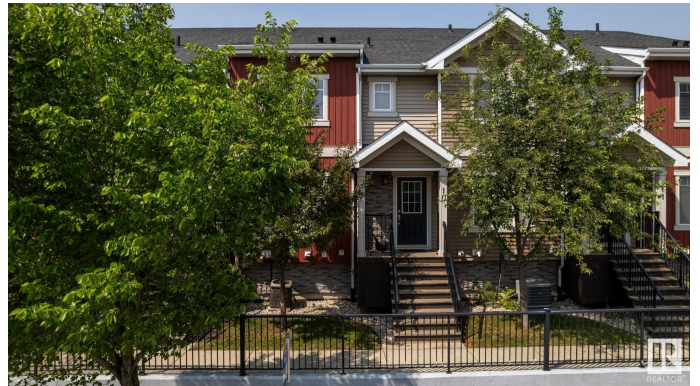
Carlton, Edmonton, AB

This bright & spacious 2 bedroom, 2 bath town home in Carlton Corner shows great and will have your attention the moment you walk in. You're greeted to beautiful **HARDWOOD** throughout the main with a large living room & dining area, while the contemporary kitchen offers **GRANITE COUNTERS, DARK CABINETS & STAINLESS STEEL APPLIANCES**. Next to the dining area are sliding doors to the West facing patio which is equipped with a gas line for those year round barbecues. The staircase offers a **GORGEOUS GLASS FEATURE WALL** that leads to the 2 generous size bedrooms upstairs, both with their own bath & large closets. The basement is fully finished & features a family room, laundry room & access to your double garage. This amazing property offers great access to the Anthony Henday, shopping & transportation right at your door, low condo fees & more! Welcome Home.

Built in 2013

Essential Information

MLS® #	E4441410
Price	\$329,900
Bedrooms	2
Bathrooms	2.50
Full Baths	2



Half Baths	1
Square Footage	1,273
Acres	0.00
Year Built	2013
Type	Condo / Townhouse
Sub-Type	Townhouse
Style	2 Storey
Status	Active

Community Information

Address	10 13810 166 Avenue
Area	Edmonton
Subdivision	Carlton
City	Edmonton
County	ALBERTA
Province	AB
Postal Code	T6V 0K4

Amenities

Amenities	Deck, Parking-Visitor
Parking	Double Garage Attached

Interior

Interior Features	ensuite bathroom			
Appliances	Dishwasher-Built-In,	Dryer,	Oven-Microwave,	Refrigerator,
	Stove-Electric, Washer			
Heating	Forced Air-1, Natural Gas			
Stories	3			
Has Basement	Yes			
Basement	Full, Finished			

Exterior

Exterior	Wood, Vinyl
Exterior Features	Landscaped, Public Transportation, Shopping Nearby
Roof	Asphalt Shingles
Construction	Wood, Vinyl
Foundation	Concrete Perimeter

School Information

Elementary	Elizabeth Finch School
Middle	Elizabeth Finch School
High	Ross Sheppard School

Additional Information

Date Listed	June 6th, 2025
Days on Market	14
Zoning	Zone 27
Condo Fee	\$272

DATA IS DEEMED RELIABLE BUT IS NOT GUARANTEED ACCURATE BY THE REALTORS® ASSOCIATION OF EDMONTON. COPYRIGHT 2025 BY THE REALTORS® ASSOCIATION OF EDMONTON. ALL RIGHTS RESERVED. Trademarks are owned or controlled by the Canadian Real Estate Association (CREA) and identify real estate professionals who are members of CREA (REALTOR®, REALTORS®) and/or the quality of services they provide (MLS®, Multiple Listing Service®)

Listing information last updated on June 20th, 2025 at 10:03am MDT