

Courtesy Of Sam Killick Of ARIVL

# \$243,500 - 505 10135 Saskatchewan Drive, Edmonton

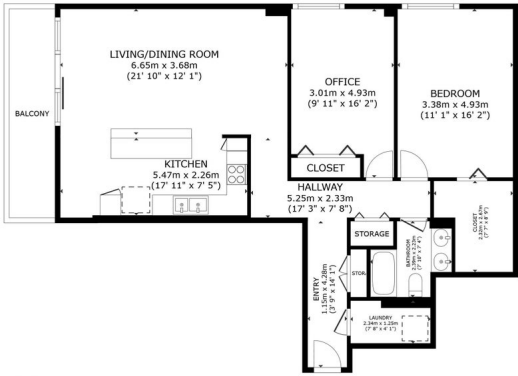
MLS® #E4447757

**\$243,500**

2 Bedroom, 1.00 Bathroom, 1,060 sqft  
Condo / Townhouse on 0.00 Acres

Strathcona, Edmonton, AB

BREATHTAKING RIVER VALLEY VIEWS!  
THIS 1060SQFT RENOVATED 2-BED  
CONDO ON SASK DR OFFERS ONE OF  
THE BEST UNOBSTRUCTED SKYLINE  
VIEWS IN EDMONTON. The stunning kitchen  
features granite counters, upgraded  
appliances, newer cabinets, and a stylish  
eat-up bar—perfect for entertaining. Both  
bedrooms are spacious enough for king beds  
and full furniture. The updated bath includes a  
double vanity and tiled tub/shower combo.  
Enjoy the view from your private balcony with  
space for full patio seating. Bonus: this unit  
has in-suite laundry—a rare perk! The  
building is well-managed, pet-friendly, and  
packed with amenities like a pool, sauna, gym,  
and more. All utilities are included in condo  
fees and located only steps from Whyte Ave,  
Strathcona Market, and a short jaunt to the  
University of Alberta Campus! Whether you're  
investing or looking to live in one of the city's  
most iconic locations, this unit delivers  
comfort, convenience, and unbeatable views.  
Don't miss out—this might be the paw-fect  
home for you!



CRANLEIGH TOWERS  
#505-10135 SASKATCHEWAN DRIVE NW  
STRATHCONA, EDMONTON

FLOOR PLAN

GROSS INTERNAL AREA  
FLOOR PLAN: 96.5 m<sup>2</sup> (1,046 sq ft)  
ENCLOSURE AREA: BALCONY: 2.7 m<sup>2</sup> (29 sq ft)  
TOTAL: 99.2 m<sup>2</sup> (1,075 sq ft)  
SIZES AND DIMENSIONS ARE APPROXIMATE, ACTUAL MAY VARY

Built in 1973

## Essential Information

MLS® # E4447757  
Price \$243,500

|                |                        |
|----------------|------------------------|
| Bedrooms       | 2                      |
| Bathrooms      | 1.00                   |
| Full Baths     | 1                      |
| Square Footage | 1,060                  |
| Acres          | 0.00                   |
| Year Built     | 1973                   |
| Type           | Condo / Townhouse      |
| Sub-Type       | Apartment High Rise    |
| Style          | Single Level Apartment |
| Status         | Active                 |

### Community Information

|             |                              |
|-------------|------------------------------|
| Address     | 505 10135 Saskatchewan Drive |
| Area        | Edmonton                     |
| Subdivision | Strathcona                   |
| City        | Edmonton                     |
| County      | ALBERTA                      |
| Province    | AB                           |
| Postal Code | T6E 4Y9                      |

### Amenities

|                |  |
|----------------|--|
| Amenities      | Exercise Room, Intercom, Parking-Visitor, Pool-Indoor, Sauna; Swirlpool; Steam, Security Door, See Remarks |
| Parking Spaces | 1  |
| Parking        | Heated, Underground  |
| Has Pool       | Yes  |

### Interior

|              |  |
|--------------|--|
| Appliances   | Dishwasher-Built-In, Dryer, Garage Control, Hood Fan, Refrigerator, Stove-Electric, Washer, Window Coverings |
| Heating      | Baseboard, Hot Water, Natural Gas  |
| # of Stories | 21   |
| Stories      | 1  |
| Has Basement | Yes  |
| Basement     | None, No Basement  |

### Exterior

|                   |  |
|-------------------|--|
| Exterior          | Concrete   |
| Exterior Features | Golf Nearby, Public Swimming Pool, Public Transportation, River Valley |

View, River View, Schools, Shopping Nearby, View City, View Downtown

|              |                    |
|--------------|--------------------|
| Roof         | Tar & Gravel       |
| Construction | Concrete           |
| Foundation   | Concrete Perimeter |

### School Information

|            |                        |
|------------|------------------------|
| Elementary | King Edward School     |
| Middle     | Academy at King Edward |
| High       | Academy at King Edward |

### Additional Information

|                |                 |
|----------------|-----------------|
| Date Listed    | July 15th, 2025 |
| Days on Market | 6               |
| Zoning         | Zone 15         |
| Condo Fee      | \$741           |

DATA IS DEEMED RELIABLE BUT IS NOT GUARANTEED ACCURATE BY THE REALTORS® ASSOCIATION OF EDMONTON. COPYRIGHT 2025 BY THE REALTORS® ASSOCIATION OF EDMONTON. ALL RIGHTS RESERVED. Trademarks are owned or controlled by the Canadian Real Estate Association (CREA) and identify real estate professionals who are members of CREA (REALTOR®, REALTORS®) and/or the quality of services they provide (MLS®, Multiple Listing Service®)

Listing information last updated on July 21st, 2025 at 12:17am MDT