

\$139,900 - 308 11441 Ellerslie Road, Edmonton

MLS® #E4448175

\$139,900

1 Bedroom, 1.00 Bathroom, 663 sqft

Condo / Townhouse on 0.00 Acres

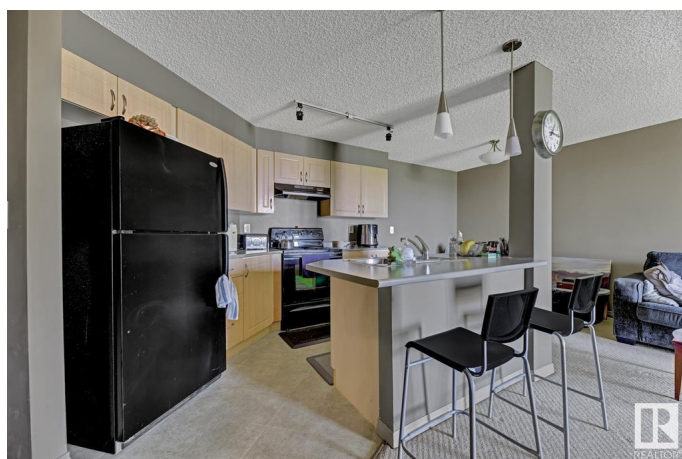
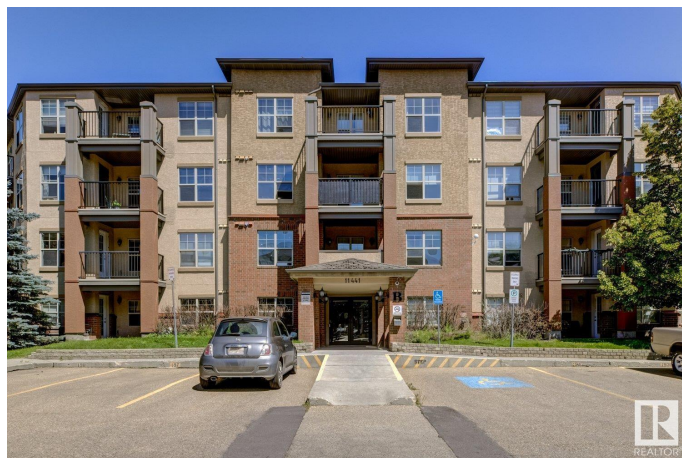
Rutherford (Edmonton), Edmonton, AB

LIVE IN RUTHERFORD VILLAGE! This one bedroom, 3rd floor north facing condo, is perfect for students or professionals. Features include: open concept, efficient layout, modern colors, walk through closet, covered balcony with gas BBQ, ensuite laundry, underground parking and storage room. Rutherford Village offers elevators, visitor parking and is pet friendly. All utilities are included in the condo fees including power. Located within walking distance to shopping and public transport. Quick access to Anthony Henday Drive, Calgary Trail and Edmonton Airport. **WELCOME HOME!**

Built in 2005

Essential Information

| | |
|----------------|------------------------|
| MLS® # | E4448175 |
| Price | \$139,900 |
| Bedrooms | 1 |
| Bathrooms | 1.00 |
| Full Baths | 1 |
| Square Footage | 663 |
| Acres | 0.00 |
| Year Built | 2005 |
| Type | Condo / Townhouse |
| Sub-Type | Lowrise Apartment |
| Style | Single Level Apartment |



| | |
|--------|--------|
| Status | Active |
|--------|--------|

Community Information

| | |
|-------------|--------------------------|
| Address | 308 11441 Ellerslie Road |
| Area | Edmonton |
| Subdivision | Rutherford (Edmonton) |
| City | Edmonton |
| County | ALBERTA |
| Province | AB |
| Postal Code | T6W 1S9 |

Amenities

| | |
|----------------|---|
| Amenities | Intercom, Parking-Visitor, Storage-Locker Room, Vinyl Windows |
| Parking Spaces | 1 |
| Parking | Heated, Underground |

Interior

| | |
|--------------|---|
| Appliances | Dishwasher-Built-In, Refrigerator, Stacked Washer/Dryer, Stove-Electric |
| Heating | Baseboard, Natural Gas |
| # of Stories | 4 |
| Stories | 1 |
| Has Basement | Yes |
| Basement | None, No Basement |

Exterior

| | |
|-------------------|---|
| Exterior | Wood, Brick, Stucco |
| Exterior Features | Flat Site, Golf Nearby, Landscaped, Park/Reserve, Public Transportation, Schools, Shopping Nearby |
| Roof | Asphalt Shingles |
| Construction | Wood, Brick, Stucco |
| Foundation | Concrete Perimeter |

Additional Information

| | |
|----------------|-----------------|
| Date Listed | July 17th, 2025 |
| Days on Market | 53 |
| Zoning | Zone 55 |
| Condo Fee | \$453 |

DATA IS DEEMED RELIABLE BUT IS NOT GUARANTEED ACCURATE BY THE REALTORS® ASSOCIATION OF EDMONTON. COPYRIGHT 2025 BY THE REALTORS® ASSOCIATION OF EDMONTON. ALL RIGHTS RESERVED. Trademarks are owned or controlled by the Canadian Real Estate Association (CREA) and identify real

estate professionals who are members of CREA (REALTOR®®, REALTORS®®) and/or the quality of services they provide (MLS®®, Multiple Listing Service®®)

Listing information last updated on September 7th, 2025 at 9:31pm MDT