

## \$700,000 - 4720 124 Street, Edmonton

MLS® #E4448343

**\$700,000**

4 Bedroom, 3.00 Bathroom, 2,282 sqft

Single Family on 0.00 Acres

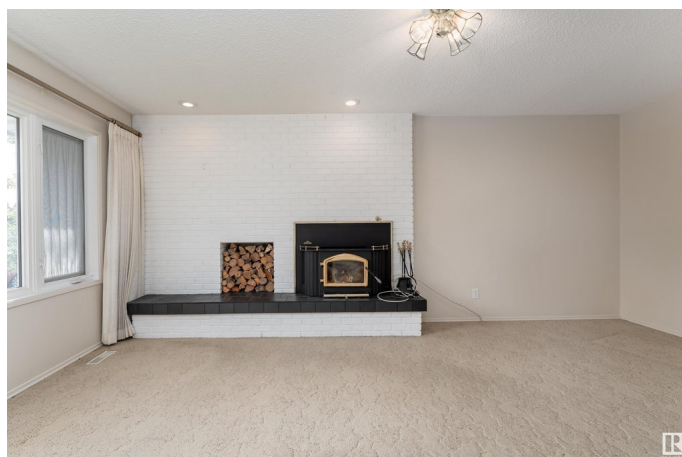
Lansdowne, Edmonton, AB

Welcome to this 2,282 sq. ft. Ace Lange built home in Lansdowne! Enjoy a unique layout with carpet and vinyl flooring, spacious and bright living room that fills the home with soft natural light, and family room with wood-burning fireplace creating a warm atmosphere. Upstairs, the spacious primary bedroom includes a 3-piece ensuite and walk-in closet, and other bedrooms have ample closet space. The fully finished basement has a wet bar and rec room, ideal for hosting, movie nights, or a home gym. Double detached garage, and a landscaped front yard with a cozy deck, plus a large south-facing backyard perfect for activities and relaxation. Located in front of Lansdowne Park and Playground, near top schools, Southgate Centre, and Whitemud Drive, outdoor lovers will appreciate being minutes from Snow Valley Ski Club, Whitemud Creek Ravine, and Rainbow Valley Park with year-round activities at your doorstep.

Built in 1967

### Essential Information

MLS® #	E4448343
Price	\$700,000
Bedrooms	4
Bathrooms	3.00



Full Baths	2
Half Baths	2
Square Footage	2,282
Acres	0.00
Year Built	1967
Type	Single Family
Sub-Type	Detached Single Family
Style	2 Storey
Status	Active

### Community Information

Address	4720 124 Street
Area	Edmonton
Subdivision	Lansdowne
City	Edmonton
County	ALBERTA
Province	AB
Postal Code	T6H 3T8

### Amenities

Amenities	Deck, Wet Bar
Parking	Double Garage Detached

### Interior

Interior Features	ensuite bathroom
Appliances	Dishwasher-Built-In, Dryer, Hood Fan, Oven-Microwave, Refrigerator, Stove-Electric, Washer, Window Coverings
Heating	Forced Air-1, Natural Gas
Fireplace	Yes
Fireplaces	None
Stories	3
Has Basement	Yes
Basement	Full, Finished

### Exterior

Exterior	Wood, Vinyl
Exterior Features	Fenced, Golf Nearby, Landscaped, Playground Nearby, Schools, Shopping Nearby, Ski Hill Nearby
Roof	Asphalt Shingles

Construction	Wood, Vinyl
Foundation	Concrete Perimeter

**School Information**

Elementary	Lansdowne Elementary
Middle	Vernon Barfield
High	Harry Ainlay High School

**Additional Information**

Date Listed	July 17th, 2025
Days on Market	4
Zoning	Zone 15

DATA IS DEEMED RELIABLE BUT IS NOT GUARANTEED ACCURATE BY THE REALTORS® ASSOCIATION OF EDMONTON. COPYRIGHT 2025 BY THE REALTORS® ASSOCIATION OF EDMONTON. ALL RIGHTS RESERVED.Trademarks are owned or controlled by the Canadian Real Estate Association (CREA) and identify real estate professionals who are members of CREA (REALTOR®, REALTORS®) and/or the quality of services they provide (MLS®, Multiple Listing Service®)

Listing information last updated on July 21st, 2025 at 4:47pm MDT