

\$499,999 - 9 Wilkinson Place, Leduc

MLS® #E4450991

\$499,999

4 Bedroom, 3.00 Bathroom, 1,409 sqft
Single Family on 0.00 Acres

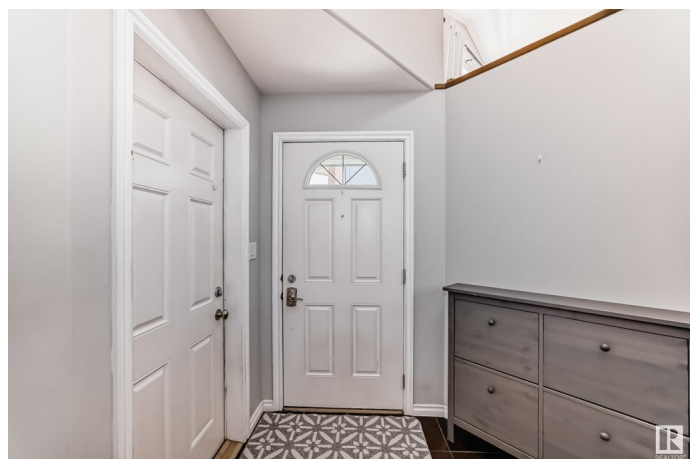
Windrose, Leduc, AB

Beautifully maintained 4 bed, 3 bath air-conditioned home with over 2,000 sq ft of finished living space—perfect for family living and entertaining. The main floor offers a warm, inviting living room with large windows and a cozy gas fireplace. Vaulted ceilings and natural light brighten the dining area, which overlooks the fully landscaped backyard. The open kitchen features a breakfast bar and excellent prep space for hosting. Two bedrooms and a full bath complete the main floor. Upstairs, the spacious primary suite includes a walk-in closet and private ensuite. The fully finished basement adds even more space with a large family room, 4th bedroom, and full bath. The oversized double attached garage is heated, insulated, 27x24' with a dog run beside. Enjoy summer evenings on the large elevated deck with enclosed storage below, a stone patio, and a gazebo in the private backyard. Located in sought-after Windrose, with easy access to schools, parks, shopping, and just a short drive to the airport!

Built in 2005

Essential Information

MLS® #	E4450991
Price	\$499,999
Bedrooms	4



Bathrooms	3.00
Full Baths	3
Square Footage	1,409
Acres	0.00
Year Built	2005
Type	Single Family
Sub-Type	Detached Single Family
Style	Bi-Level
Status	Active

Community Information

Address	9 Wilkinson Place
Area	Leduc
Subdivision	Windrose
City	Leduc
County	ALBERTA
Province	AB
Postal Code	T9E 8N1

Amenities

Amenities	Air Conditioner, Deck
Parking	Double Garage Attached

Interior

Interior Features	ensuite bathroom
Appliances	Air Conditioning-Central, Dishwasher - Energy Star, Dishwasher-Built-In, Dryer, Garage Control, Garage Opener, Refrigerator, Stove-Electric, Window Coverings, Garage Heater
Heating	Forced Air-1, Natural Gas
Stories	2
Has Basement	Yes
Basement	Full, Finished

Exterior

Exterior	Wood, Vinyl
Exterior Features	Airport Nearby, Cul-De-Sac, Fenced, Golf Nearby, Landscaped, Playground Nearby, Schools, Shopping Nearby
Roof	Asphalt Shingles
Construction	Wood, Vinyl

Foundation Concrete Perimeter

Additional Information

Date Listed August 2nd, 2025

Days on Market 10

Zoning Zone 81

DATA IS DEEMED RELIABLE BUT IS NOT GUARANTEED ACCURATE BY THE REALTORS® ASSOCIATION OF EDMONTON. COPYRIGHT 2025 BY THE REALTORS® ASSOCIATION OF EDMONTON. ALL RIGHTS RESERVED. Trademarks are owned or controlled by the Canadian Real Estate Association (CREA) and identify real estate professionals who are members of CREA (REALTOR®, REALTORS®) and/or the quality of services they provide (MLS®, Multiple Listing Service®)

Listing information last updated on August 12th, 2025 at 6:17pm MDT