

# \$155,000 - 306 9816 112 Street, Edmonton

MLS® #E4452492

**\$155,000**

1 Bedroom, 1.00 Bathroom, 683 sqft  
Condo / Townhouse on 0.00 Acres

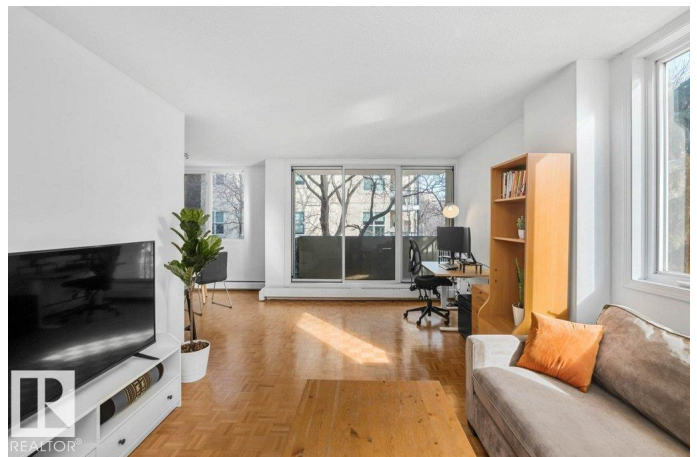
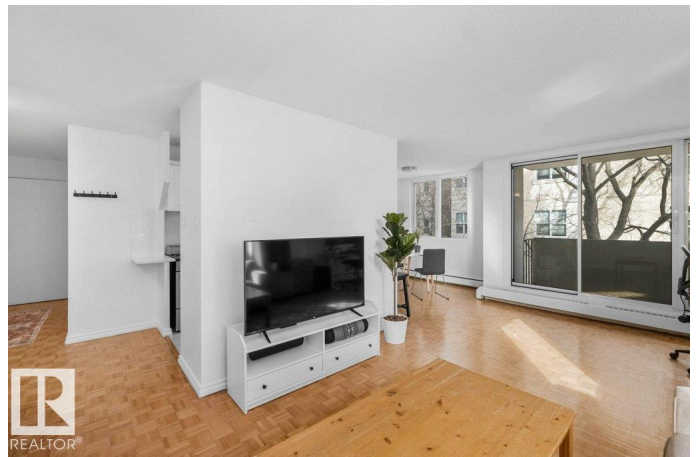
W&hkw&ant&win, Edmonton, AB

Discover modern living in downtown Edmonton with this 1-bedroom corner unit, offering stunning river valley views. Nestled in a quiet, concrete building, it features lots of windows for ample light and breathtaking sights. The modern kitchen, stylish bathroom, and generous storage space ensure comfort and convenience. Enjoy access to a shared rooftop terrace with panoramic city and valley views, secure covered parking, and proximity to the LRT for easy commuting. This prime location is ideal for experiencing downtown's vibrant lifestyle. A unique opportunity to embrace urban living at its finest.

Built in 1963

## Essential Information

|                |                        |
|----------------|------------------------|
| MLS® #         | E4452492               |
| Price          | \$155,000              |
| Bedrooms       | 1                      |
| Bathrooms      | 1.00                   |
| Full Baths     | 1                      |
| Square Footage | 683                    |
| Acres          | 0.00                   |
| Year Built     | 1963                   |
| Type           | Condo / Townhouse      |
| Sub-Type       | Apartment High Rise    |
| Style          | Single Level Apartment |



Status Active

### Community Information

Address 306 9816 112 Street  
Area Edmonton  
Subdivision W&hkw&ant&win  
City Edmonton  
County ALBERTA  
Province AB  
Postal Code T5K 1L5

### Amenities

Amenities Detectors Smoke, No Animal Home, No Smoking Home, Party Room, Secured Parking, Security Door, Storage-In-Suite, Television Connection  
Parking Parkade, Stall

### Interior

Appliances Refrigerator, Stove-Electric  
Heating Hot Water, Natural Gas  
# of Stories 14  
Stories 1  
Has Basement Yes  
Basement None, No Basement

### Exterior

Exterior Concrete  
Exterior Features Backs Onto Park/Trees, Golf Nearby, Landscaped, Playground Nearby, Public Transportation, Schools, Shopping Nearby, View City  
Roof Tar & Gravel  
Construction Concrete  
Foundation Concrete Perimeter

### School Information

Elementary Wihkwentowin School  
Middle Westminster School  
High Victoria School

### Additional Information

Date Listed August 12th, 2025  
Days on Market 8

|           |         |
|-----------|---------|
| Zoning    | Zone 12 |
| Condo Fee | \$512   |

DATA IS DEEMED RELIABLE BUT IS NOT GUARANTEED ACCURATE BY THE REALTORS® ASSOCIATION OF EDMONTON. COPYRIGHT 2025 BY THE REALTORS® ASSOCIATION OF EDMONTON. ALL RIGHTS RESERVED. Trademarks are owned or controlled by the Canadian Real Estate Association (CREA) and identify real estate professionals who are members of CREA (REALTOR®, REALTORS®) and/or the quality of services they provide (MLS®, Multiple Listing Service®)

Listing information last updated on August 19th, 2025 at 10:17pm MDT