

# \$199,900 - 31 10331 106 Street, Edmonton

MLS® #E4453299

**\$199,900**

1 Bedroom, 2.00 Bathroom, 1,168 sqft  
Condo / Townhouse on 0.00 Acres

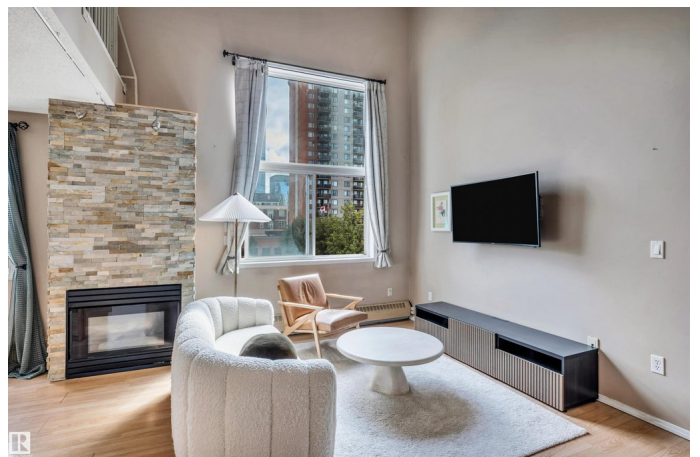
Downtown (Edmonton), Edmonton, AB

Experience vibrant downtown living at its finest in this magnificent top-floor loft-style condo, just steps from Rogers Place, the Ice District, Grant MacEwan University, and the Farmers Market. Featuring soaring open-to-above ceilings and expansive windows, this home is bathed in natural light and offers spectacular city views. The open-concept layout includes a spacious primary bedroom with a walk-in closet and a 4-pieces ensuite, plus a generous kitchen with stainless steel appliances, ceramic tile flooring, and a cultured stone island. The bright living area complete with a striking gas fireplace, and flows seamlessly into the dining space. Additional features include a second 4-piece bathroom, in-suite laundry, ample storage, and a versatile loft area ideal for a second bedroom or home office. A heated underground parking adds convenience and security. Combining modern comfort with striking loft design, this unique gem puts you in the heart of Edmontonâ€™s most exciting neighborhood.

Built in 1993

## Essential Information

MLS® #	E4453299
Price	\$199,900
Bedrooms	1



Bathrooms	2.00
Full Baths	2
Square Footage	1,168
Acres	0.00
Year Built	1993
Type	Condo / Townhouse
Sub-Type	Lowrise Apartment
Style	Loft
Status	Active

### Community Information

Address	31 10331 106 Street
Area	Edmonton
Subdivision	Downtown (Edmonton)
City	Edmonton
County	ALBERTA
Province	AB
Postal Code	T5J 1H8

### Amenities

Amenities	Detectors Smoke, Sprinkler System-Fire
Parking	Heated, Underground

### Interior

Interior Features	ensuite bathroom
Appliances	Dishwasher-Built-In, Dryer, Microwave Hood Fan, Refrigerator, Stove-Electric, Washer, Window Coverings
Heating	Hot Water, Natural Gas
Fireplace	Yes
Fireplaces	Stone Facing
# of Stories	3
Stories	2
Has Basement	Yes
Basement	None, No Basement

### Exterior

Exterior	Wood, Stucco
Exterior Features	Public Transportation, Schools, Shopping Nearby, View City
Roof	Asphalt Shingles

Construction	Wood, Stucco
Foundation	Concrete Perimeter

**Additional Information**

Date Listed	August 15th, 2025
Days on Market	1
Zoning	Zone 12
Condo Fee	\$596

DATA IS DEEMED RELIABLE BUT IS NOT GUARANTEED ACCURATE BY THE REALTORS® ASSOCIATION OF EDMONTON. COPYRIGHT 2025 BY THE REALTORS® ASSOCIATION OF EDMONTON. ALL RIGHTS RESERVED.Trademarks are owned or controlled by the Canadian Real Estate Association (CREA) and identify real estate professionals who are members of CREA (REALTOR®, REALTORS®) and/or the quality of services they provide (MLS®, Multiple Listing Service®)

Listing information last updated on August 16th, 2025 at 3:47pm MDT